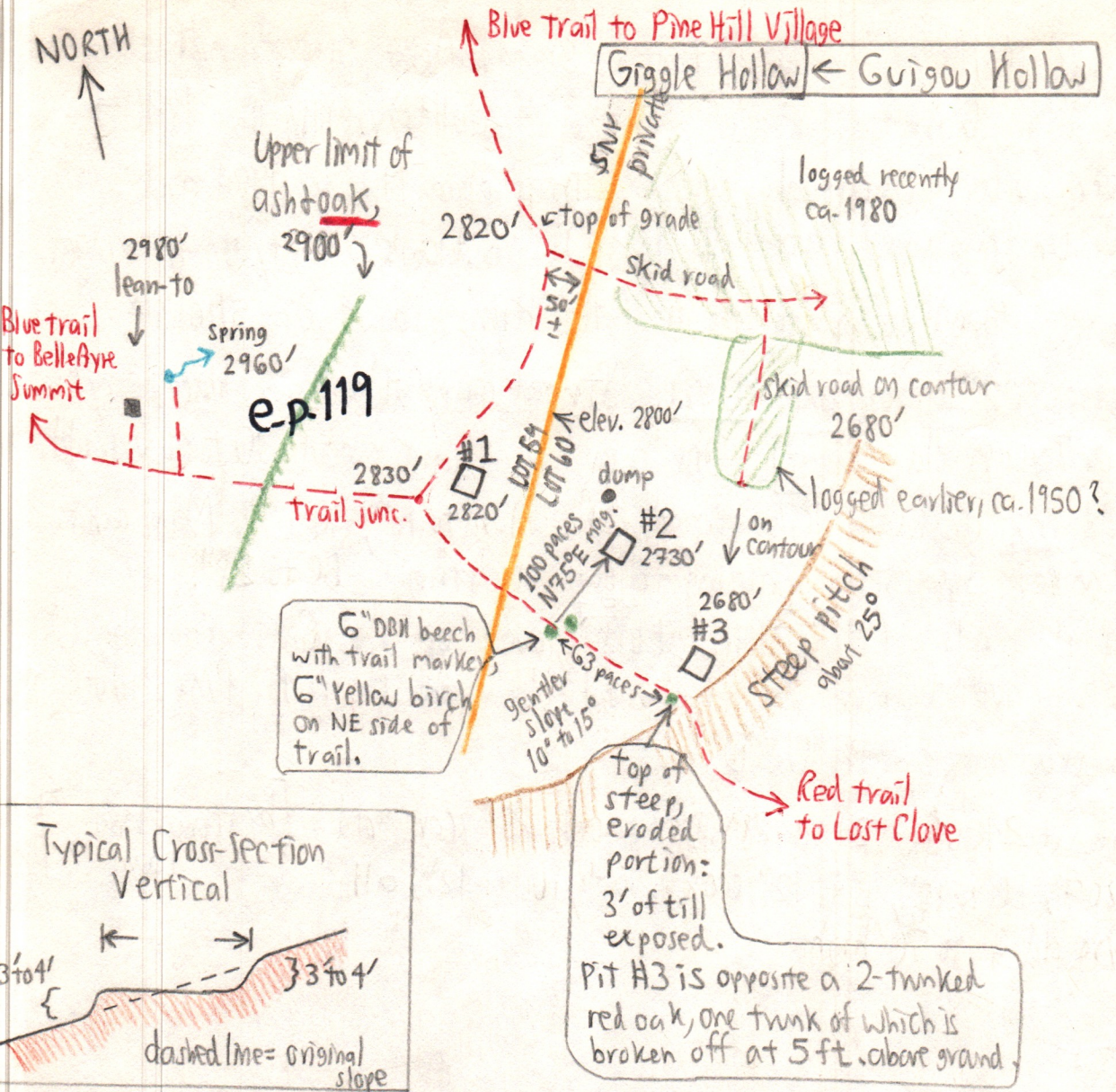


# Charcoal Kilns on Belle Ayre Mtn.

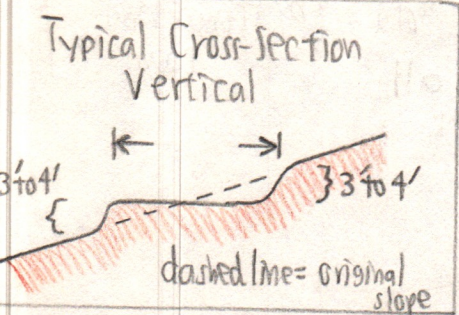


Diagrammatic:  
not to scale

Directions from Paul North via phone call made 5/14/87

3 more kilns on p-202-51

more detail over →



Charcoal Pit #	Horizontal dimensions	Cut out head wall height	Built up base ridge height	Present flat surface	Trowel depth to mineral soil	Comments
1	13 paces x 13	4'	4'	without any woody plants	2", 2", 3", >6" (till not seen)	Campsite & campfire ring used by hikers; charcoal under the litter.
2	16 paces x 13	3'	3'	Several 3" SUGS, (no large trees, no shrubs), Carex & V. pap.	3", 5", 2", >6" (till not seen)	Charcoal visible at surface on built-up bare ridge. Dump of tin cans in vill.
3	12 paces x 12	3'	3'	more trees on kiln	6" to red till	nil charcoal visible on surface because of litter, but abundant beneath.

202-5

Forest History:

Paul Huth says (5/14/87 via 'phone) that his grandfather's great-grandfather nearly cleared off Garrettsan Ridge (E spur of BelleAyre) in the 1890 → 1900 (-1910?) period for charcoal. Paul cored trees about 1973 or 1974 and found them of uniform age (about 80 years). Bidlaw's Shanty <sup>was</sup> on the ridge.

The recent (ca 1980) logging to the N of the Kilns shows on 5/16/87 red oak stumps 22" across and 80 yrs. Striped maple thickets (+ blackberry) are about 5 to 7 years old [Photo]. One area had stumps about 30 to 40 yrs. old.

80 year-old oaks around the Kilns run to 24", ASH to 18", RM 7". Many oaks are double-trunked suggesting sprouting following cutting. BC to 28".

The current trails (Pine Hill <sup>NO</sup> + Lost <sup>YES</sup> Clove) up the Ridge may have originally been built to move the charcoal down the slopes to Pine Hill + Big Indian stations on the Ut D.

Ash at about 2400' is 24" to 28" DBH + only 80+ years old [by stump ring cant??]  
At (M) 2807', BC to 15", B to 12", Oak to 28", SUB to 12", all about 80 yrs old + to 70' high.

Ground Cover:

One cave-like area between Kiln #2 and the Lost Clove Trail is dominated by SUG <sup>to 12"</sup> with a few oak. Beneath are:

LL  
TB  
ALLIUM  
CAULO  
A DIV  
HYDRO  
DIC  
BOTRYCHIUM VA-  
V PAP  
V PUB

Other trees nearby:  
BC to 12"  
B to 12"  
GST (one seen)

# Belle Ayre (see special sheet on Charcoal Kilns)

P202-51

202-6  
5/16/87

Frosty in Fleuchmanns 70'

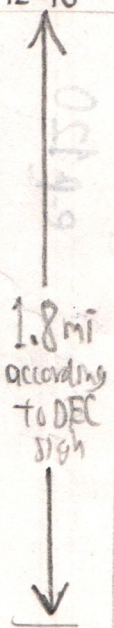
Site	Map Elev	p	Δp	Δe	e	Time	p rate
Pine Hill Sta. (U&D)	A 1659'	30.32	0	0	1659'	8:27 AM	$2140' - 1659' = 481'$
powerline	B	30.18	.14	109	1768		$30.32'' - 29.70'' = 0.62''$
gated dump	C	29.94	.38	295	1954		rate: <u>0.776</u>
rd. turns E	D ±2095'	29.85	.47	365	2024		
trail turns S ledge	E 2140'	29.70	.62	481	2140		
skid roads ca. 1980	F	29.59	.11	108	2248		$2830' - 2140' = 690'$
	G	29.56	.14	138	2278		$29.70'' - 29.00'' = 0.70''$
	H	29.50	.20	197	2337		
	I	29.46	.24	237	2377		
	J	29.34	.36	355	2495		
cove	K	29.32	.38	375	2515		rate: $\frac{690}{700} = 0.986$
	L	29.19	.51	503	2643		
	M	29.03	.67	661	2801		
Trail JC Lean to	N 2830'	29.00	.70	690	2830	9:27 } 11:45 } kilns	
Brown Sprs.	O	28.78	.22	187	3017		$3375' - 2830' = 545'$
Foundation	P	28.60	.40	341	3171		$29.00'' - 28.36'' = 0.64''$
Summit	Q	28.45	.55	469	3299	NOON	rate: <u>0.852</u>
Cath. Glen Jc	R 3375'	28.36	.64	545	3375	12:20 lunch	
slope Enter ski slope Base ski slope	S 3260'	28.47	1.75	1601	3260	12:46	
	T	28.70	1.52	1391	3050		$3260' - 1659' = 1601'$
	U <b>e-p 120</b>	28.75	1.47	1345	3004		
	V	28.82	1.40	1281	2940		
	W	29.26	.96	878	2537		$30.22 - 28.47 = 1.75''$
	X	29.36	.86	787	2446		
	Y	29.37	.85	778	2437		
	Z	29.52	.70	641	2300		
	AA	29.66	.56	512	2171		rate = $\frac{1601}{1750} = 0.915$
	AB	29.76	.46	421	2080		
Cut Hemlocks RR Enter tracks bldg. on Ut D	AC	29.95	.27	247	1906		
	AD	30.01	.21	192	1851		
	AE	30.14	.08	73	1732		
Pine Hill Sta.	AF	30.20	.02	18	1677		
Pine Hill Sta.	A	1659	0	0	1659	1:58 PM	

## Cathedral Glen Trail

Summit veg. 3375' (R):  
RM-BC-YB dom. to 40'  
SUG rare  
VA mfl, OX, \$ MONT, ERY,  
CLAY in fl.

e-p 119

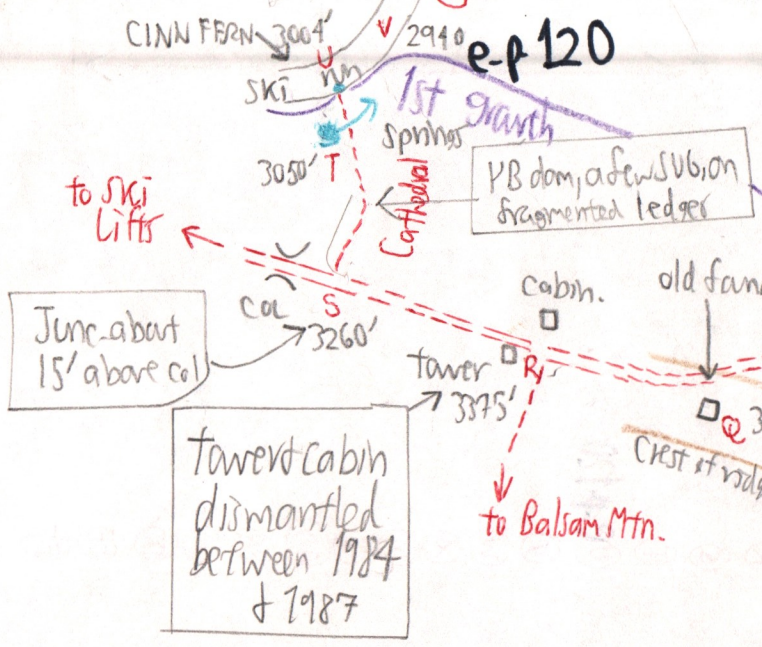
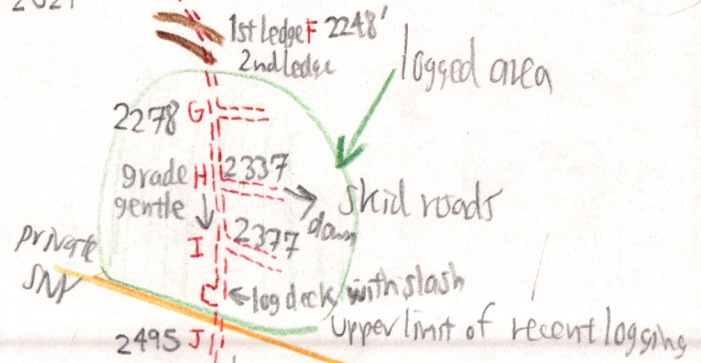
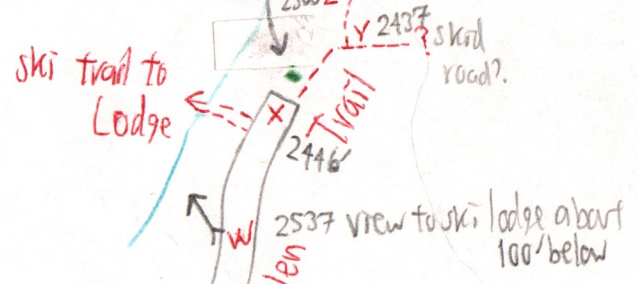
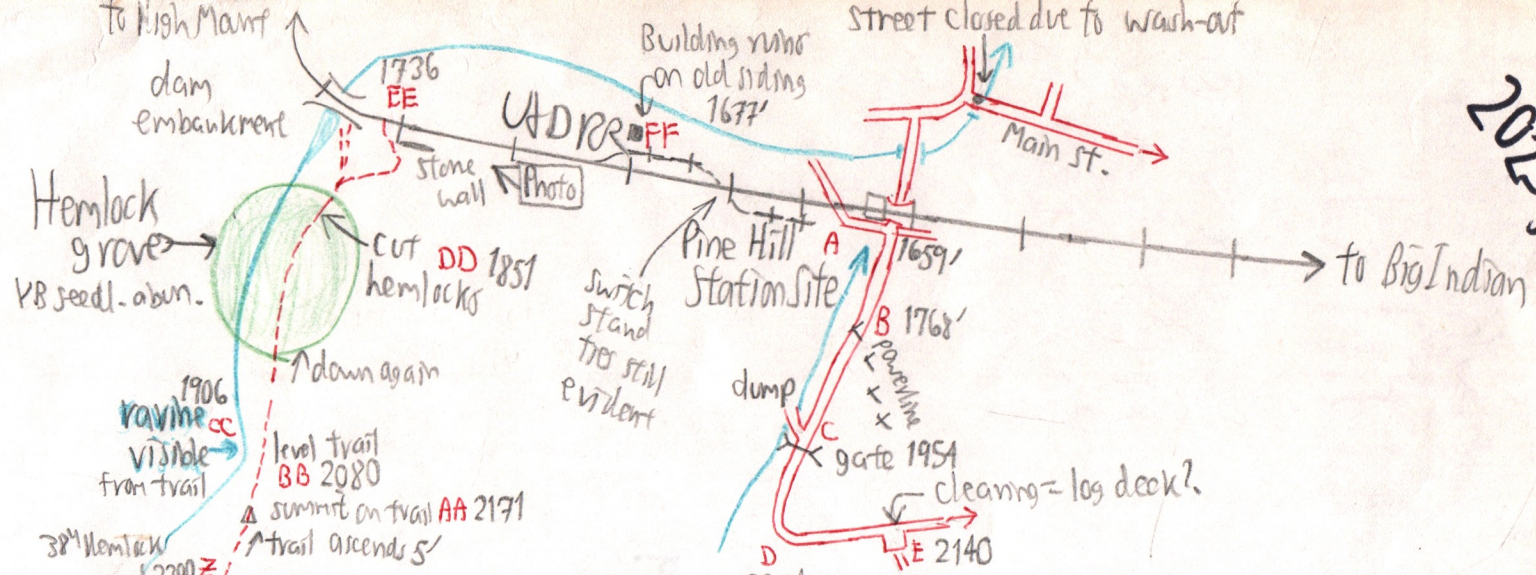
1960  
1976



2027

Distances according to DEC signs

- S to EE: 1-8 mi
- N to R: 0.6 mi
- N to Big Indian: 3.1 mi
- N to A: 2-2 mi



*Polystichum Braunii*

1st growth e-p 120

P-202-4

# Belle Ayre - Elevations for Species

## TREES

PB above 2278 on E (G) 124  
 PB above 1659 on W (A)  
 BB above 1659 on W (A) on tree  
 and 2080 (BB)  
 and 1677 (FF)

YB below 1954 (C) on ledges below  
 on talus (P) 3171  
 to 36"  
 (R) 3375  
 codom  
 to 40'

OST 2278 (G)

GB at 1677 (FF)

ASH 2298 (G) to 2900  
 2300 (Z) . 100' at 2643  
 x 30" (L)

RM 2495 (J) Common  
 at 3375 (R)  
 codom at 2080 (BB); old at 2990 (O)

OAK 2515 (K) to 2900  
 also at (EE) 1732

B understory 2515 (K)  
 codom at 2080 (BB)

SUG to 24" at 2990 (O)  
 to 24" at 3171 but  
 not dom (P)  
 YB dom on talus

PIN 2940 (V)

SORB W of old cabin  
 site 3375 (R)

BC codom at 3375 (R)  
 to 40'

BASS 100' at 2643 (L)

## SHRUBS

HAMAM 1659 (A)

MM below 1954 (C)  
 on talus at

3171 (P) and  
 talus betw (S) & (T)  
 3108

VA infl 3375 (R)

RG 3171 abun (P)

KLAC 3171 (P)

## HERBS

LL 2495 (J)

OX at 3375 (R)  
 betw 2643 & 2801

1906 (CC) (L) (M)

TE infl " "

ERY " " } no fl.  
 VROT " " }

## Polystichum brownii

at 3171 (P) between  
 trail & big 10' boulder  
 2 plants just above  
 springs. Uneiling.

OX-MC-TB under NEM  
 at 2437 (Y), + AA,  
 \$ INT

TUM flat at 1851 (DD)

NEM From (DD) 1851 to (X) 2446

38" below (X) 2446 & 2437 (Y)

Dense from 1906 to 1851 (CC) to (DD)

Stumps cut on State Land at 1851'

MO cabin 2940'

18" = 115 yr.

(V)

24" = 160 yr

Forest 40' tall at 3375 (E)

33" = 215 yr

but 80' tall at 2940 (V)

24" = 190 yr

Tree m 1/4 leaf at 3299 (O)

↑ Trees 27  
 30 respect.

# Soils

202-9

# COVE <sup>Spring 5</sup> Grand Cove

>10' till in ravine  
between 1928 & 1954

(B) (C)

no ledge until (E) 2248

>10' in dump at (C) 1951'

28" cake NW of JC. (N) 2830'; 22" cake.

till cut >36" without  
ledge near top of  
Giggle Hollow between  
2515' (K) & 2643' (L)

Cove at head of Giggle

Hollow, 2643' (L):  
Dense SUB W. PRO -  
more oak & B above  
on drier site.

SUB  
dorm.  
ASH  
BAS

Travel shows moist  
but not wet soil in  
Cove. Rills had run  
during wet periods

Beach on drier site above

30" cake at 1831' (DD) no ledge.

till at Summit (R)

375 0" to 12" to  
24" as observed on  
ledge that once  
supported tower

Striae 110° mag or could be bedding in SS with some conglomerate

2643 (L) 3171 (P) 3050 (T)

Spp	(L)	(P)	(T)
CAULO	✓	—	✓
PA	✓	—	✓
ARTS	✓	✓	—
HYDRO	✓	✓	✓
ALLIUM	✓	✓	✓
VC	✓	—	—
VPASP	✓	—	—
DIC CAN	✓	✓	✓
TIAR	✓	—	—
ADIV	✓	—	—
RADORT	✓	✓	—
MITELLA	✓	—	—
CLAV	✓	infl ✓	—
LAP	—	✓	—
TE	—	✓	—
OSMO	—	✓	—
STREPT	—	✓	—
AA	—	✓	—
ACTAEA	—	—	✓

ridge  
growth  
above  
ledge